

Kv. Arken 1

5 RoK (E1)

Lägenhet: 1157-001-01-1001

Plan: Bottenvåning

Boarea: 110,2m²

(Boarea inkluderar innerväggar, enligt Svensk Standard, areaavvikelser kan förekomma.)

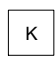

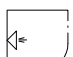









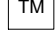
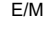

FÖRKLARINGAR

Takhöjder:

- i lägenhet: 2,50 m

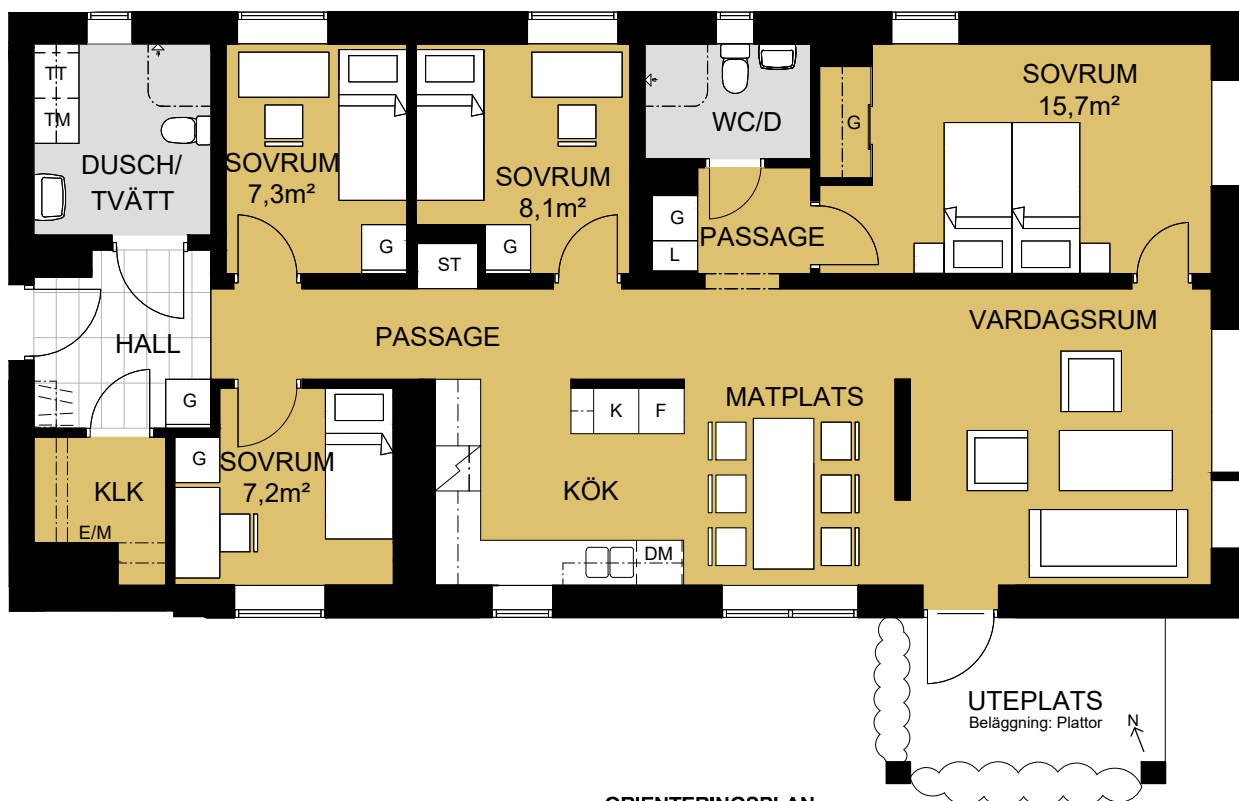
- i klk & dusch/tvätt: 2,30 m

lokala sänkningar kan förekomma

 K	Kyl	 G	Garderob		Duschdraperiskena
 F	Frys	 ST	Städsåp		Hatthylla
	Spis	 DM	Diskmaskin		Parkett
 TT	Torktumlare	 L	Linnesåp		Plastmatta
 TM	Tvättmaskin	 E/M	El/Mediaskåp		Klinker

Multimediauttag finns i samtliga lägenheter på flertalet ställen.

Reservation för att avvikelser kan förekomma.

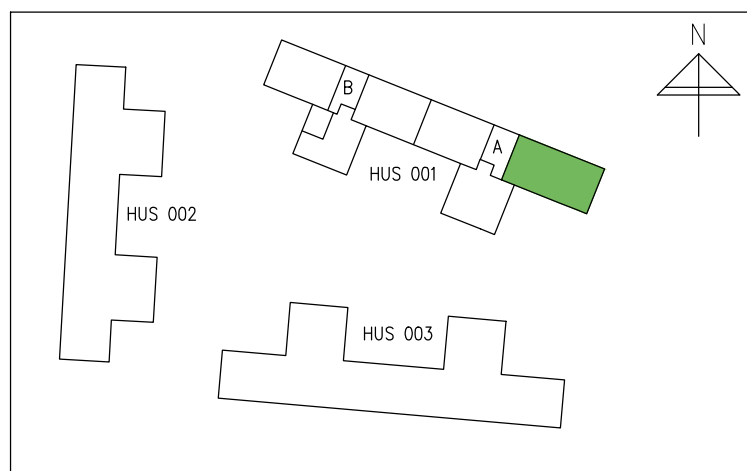


ORIENTERINGSPLAN

Adress: Serafimervägen 3A

Plan: Bottenvåning

 = Lägenhetens placering i huset



SKALA 1:100 (A4-format)

